

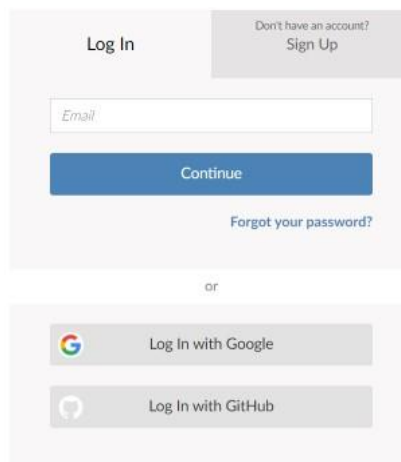
A short introduction to running R on the net (URL: posit.cloud).

R is a free software environment for statistical computing and graphics.

This document is a short introduction to executing and training in the drc package (Dose-Response Curve (DRC)) with pre-programmed R code on the internet. The URL: is

<https://posit.cloud/project/3498499>

The following screen may pop up.



Log In

Don't have an account?
Sign Up

Email

Continue

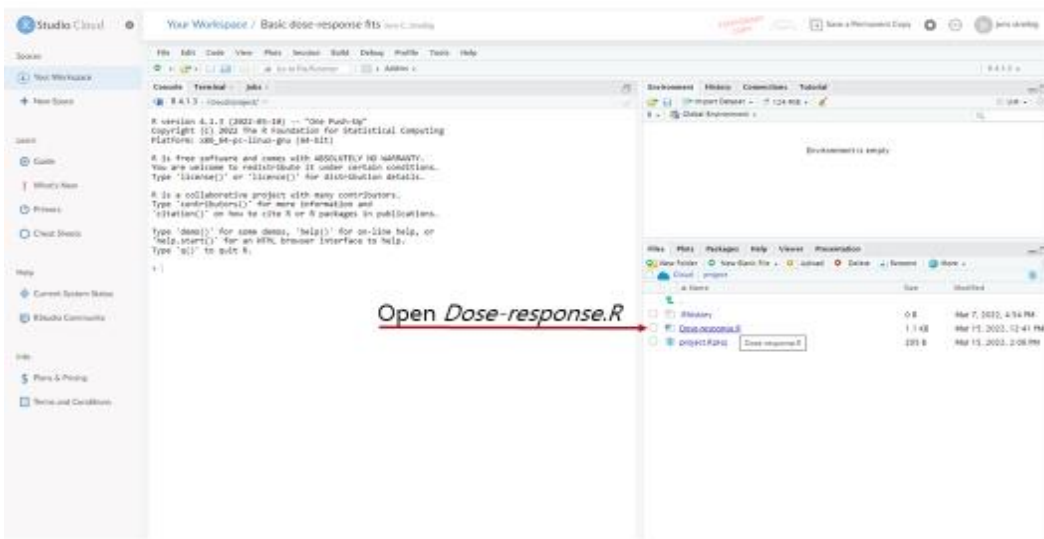
Forgot your password?

or

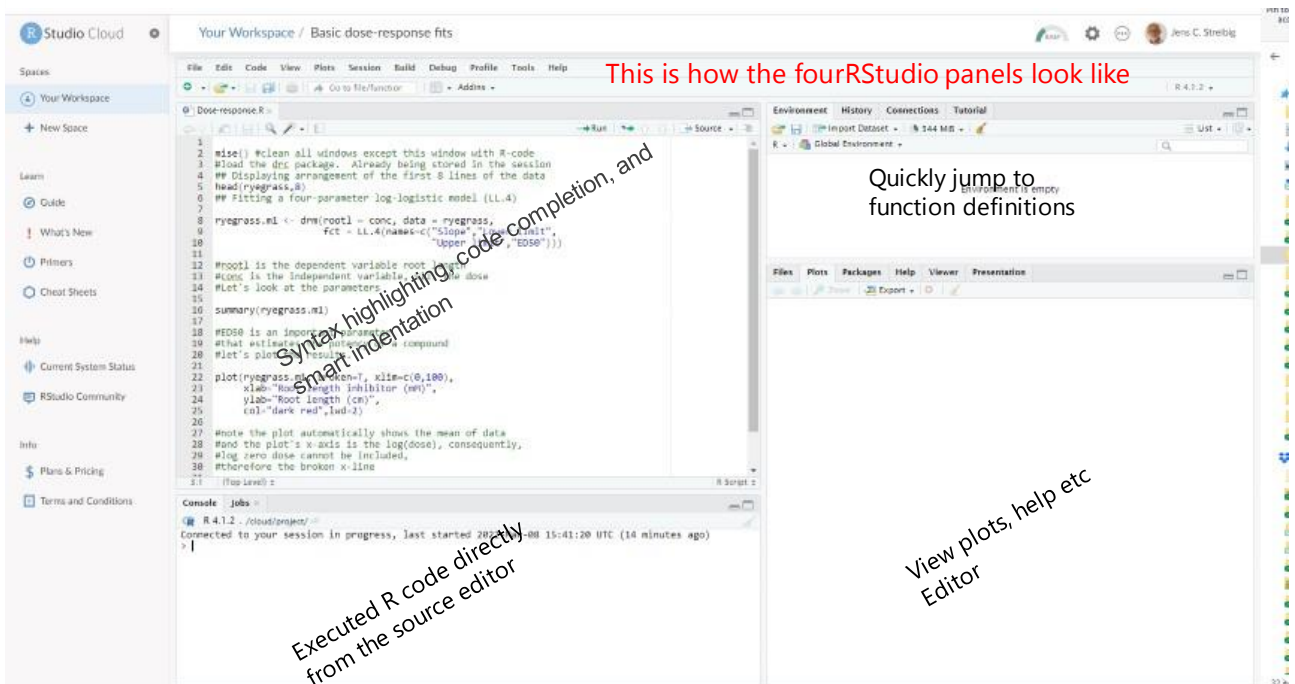
Log In with Google

Log In with GitHub

You need to log in (it is free) or sign up (free too). You do not need to install any R program on your PC, and everything is readily available on the URL above with the project number.

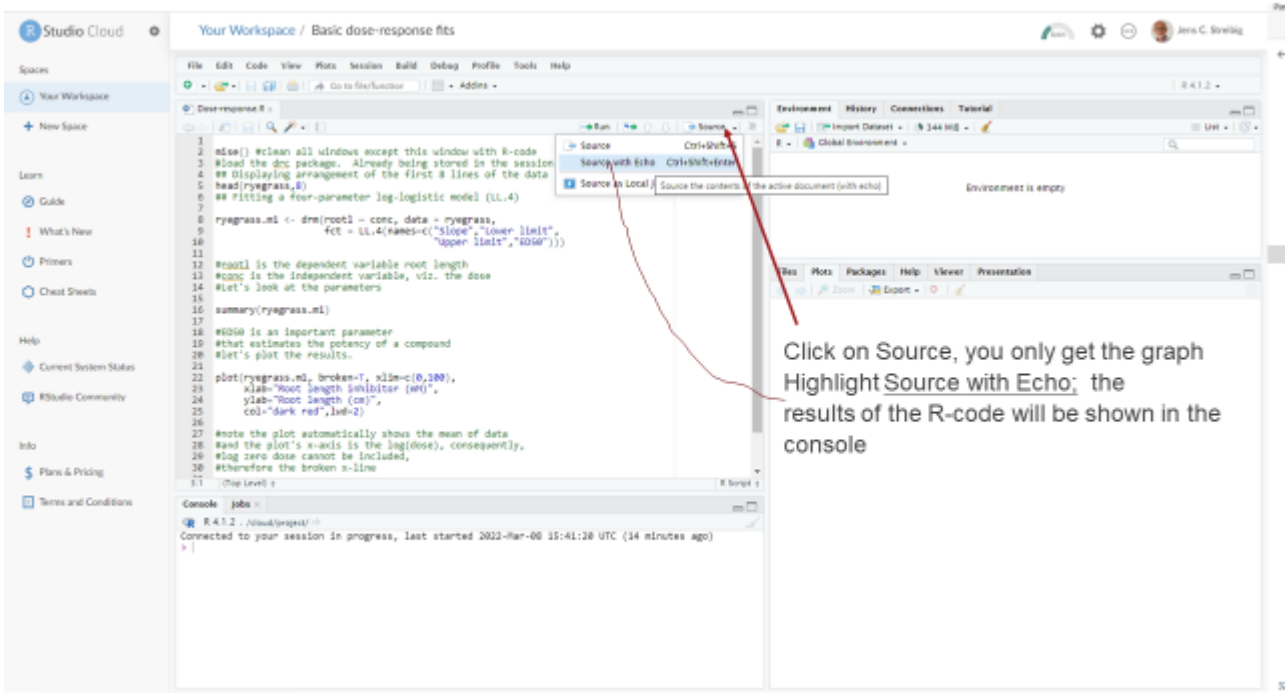


You open *Dose-response.R*, and then the next screen with the code pops up.



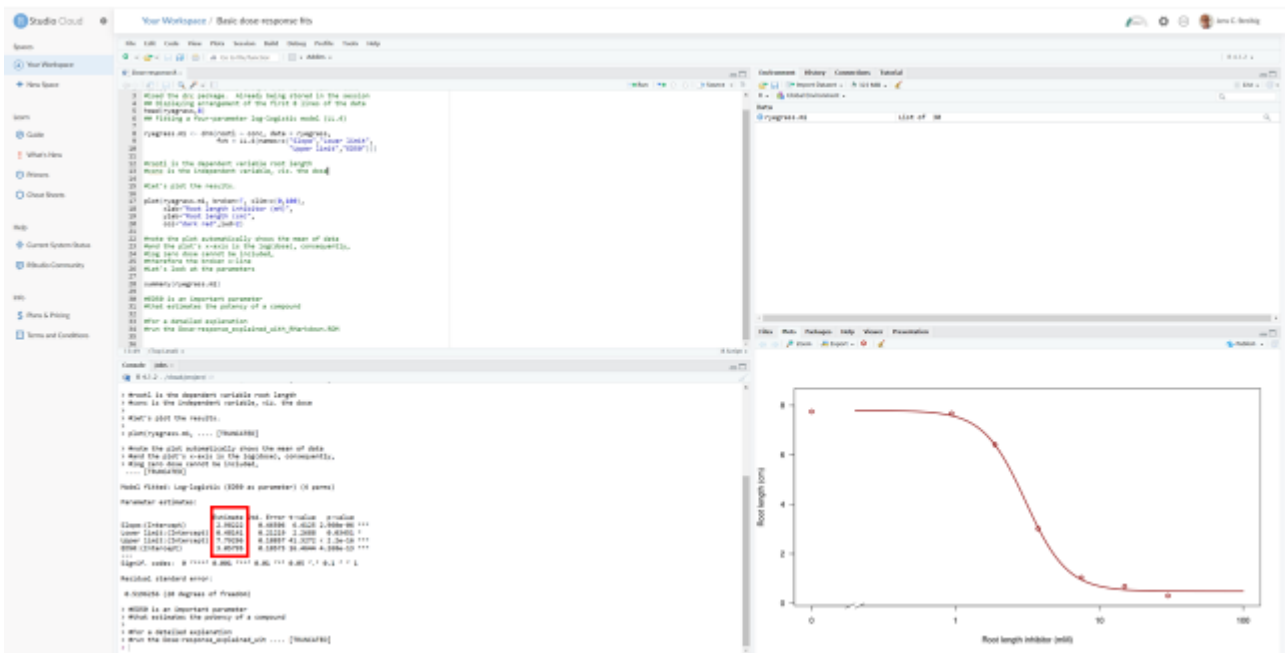
You see the four RStudio panels. The first one contains the R-code for a single dose-response curve with data already in the system. See later how to upload new data.

To execute the R-code, you do as shown below.



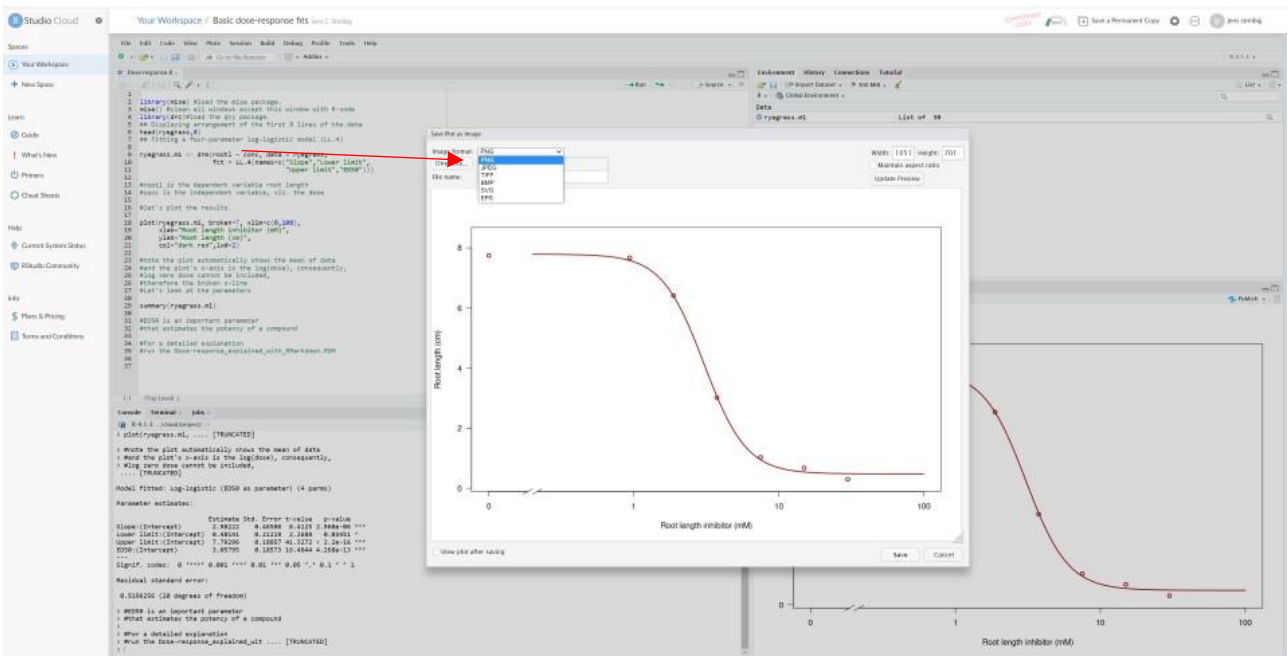
And the results are now in the bottom left and right panels. Below you can see the parameters. ED50 describes the potency of the compound. The graph to the right is the regression fit, and the points are mean responses per dose. To get more information on the regression parameters, consult the URL

<https://rstats4ag.org/dose-response-curves.html#one-dose-response-curve>

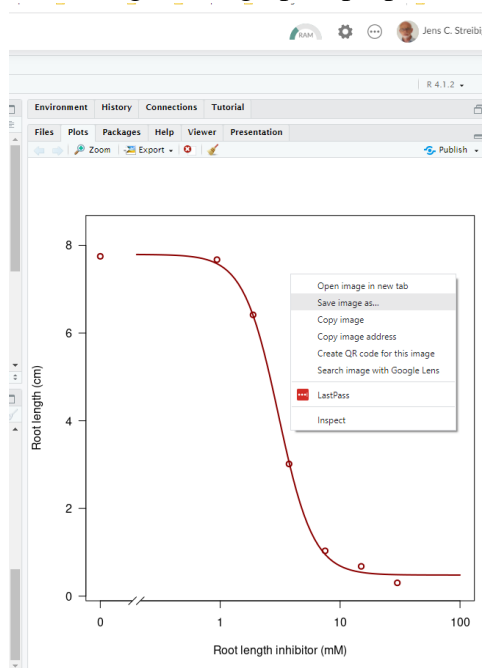


If you want to export the results, you can mark the console text (right bottom panel), copy it, and save it somewhere, e.g., in Word.

The graph can be saved in different formats and names instead of the default “plot1” name.



After choosing the graph format, you probably want to export your graph to your PC. You right-click as seen below. Choose to save and give the graph a proper name.



If you want to know more about the use of dose-response curves, look at the URL
<https://journals.plos.org/plosone/article?id=10.1371/journal.pone.0146021>

And perhaps the supplement

<https://doi.org/10.1371/journal.pone.0146021.s001>

If this demonstration has vetted your interest, you can learn to import data from your experiments.
“How to import data to The posit cloud, see URL.

<https://www.youtube.com/watch?v=FSiDrIOAjgo>

You can get further information by studying the URL

<https://www.youtube.com/watch?v=gCZ7oueZw6Q&list=PL9HYL-VRX0oSn7tBLDiSt4Vnyk3yB6ipA&index=2>

Monday, 20/02/2023

Jens

In doubt, contact jcs@plen.ku.dk.